



For Earth, For Life
Kubota

SVL

KUBOTA COMPACT TRACK LOADER SVL110-3

Kubota's first Compact Track Loader over 100 HP. Engineered for strength and versatility, this machine is designed to tackle demanding tasks with ease.







Experience more power where it counts the most! Tackle the toughest tasks!

Kubota's first Compact Track Loader with over 100 HP. Featuring an advanced hydraulic system, the SVL110-3.

- **OUTSTANDING PERFORMANCE AND PRODUCTIVITY**
- **SPACIOUS AND COMFORTABLE WORKSPACE**
- **ADVANCED MULTIFUNCTION OPERABILITY**
- **SIMPLE SERVICEABILITY**

COMPACT TRACK LOADER

SVL110-3

Engine gross horsepower (SAE J 1995): 112.7 HP (84.0 kW)
Rated operating capacity (35% of tipping load): 3700 lbs (1678 kg)
Rated operating capacity (50% of tipping load): 5286 lbs (2398 kg)
Bucket breakout force: 7650 lbs (3469 kg)
Operating weight (Closed Cab, including operator weight 165 lbs): 12322 lbs (5589 kg)

Powerful Hydraulic System

APS (Auxiliary Performance System)



This machine features our innovative patent pending hydraulic management system, APS (Auxiliary Performance System), designed to unlock the machine's full capabilities and optimize performance. Unlike conventional systems, APS ensures stable travel and consistent auxiliary power by maintaining high engine output, allowing for seamless operation across various tasks. This advanced technology provides smooth functionality, even when utilizing high-flow attachments making it the ideal choice for demanding applications.

Load Sensing System

The Load Sensing System and exceptional control valve provide the pushing and driving force you need, even during simultaneous attachment operation. Plenty of power to travel on slopes and handle attachments means you'll get the job done fast.

45 gpm Hydraulic Flow

The SVL110-3 provides 45 gpm of auxiliary hydraulic flow to satisfy customers demands. The coupler manifold has both 1/2" and 3/4" couplers.



Adjustable Maximum Oil Flow Control

Maximum AUX flow can be set from the touch panel and is based on your attachment, which helps to ensure the optimal flow rate for every job you do. The attachment icon will help you to identify which preset is for which attachment.

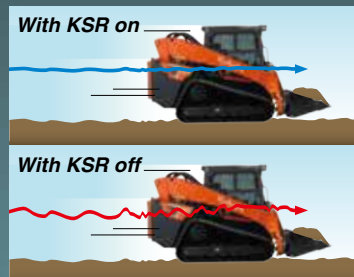
-3 SERIES STYLE KUBOTA PRODUCTIVE

The SVL110-3 is ready to take on any job with its new hydraulic system, reliable Kubota engine, impressive travel performance, and efficient cooling system.

Traveling Features

Kubota Shockless Ride (KSR)

Kubota's ride control system (KSR) is now available for Kubota CTLs! It is a loader suspension that enhances comfortability and reduces spilling loads on rough terrain.



Two-speed Travel

Shift from low gear at 5.5 mph to high gear at 8.4 mhp to ge the job done.

Creep Mode

Kubota's first compact track loader equipped with Creep mode, giving operators precise travel speed control for high-accuracy attachment work. Hold the travel speed switch to activate and set the speed from your touch screen. This reduces the need to manage travel manually, letting you focus on attachment operation. Speeds can be set from 0 to 50 using the touch screen or jog dial.

Auto-Shift

Auto shift supports your heavy dirt work and travel performance in high speed mode. The ECU is constantly monitoring the traction load. When the traction load gets high, but before the machine starts to lose traction, it automatically shifts down for better low-range torque. Once the traction load is eased, it shifts back up automatically for high speed. Now you can just leave it in high speed regardless of the work!



Track Response

Operators can now change the sensitivity of their machine control response through the LCD panel. The SVL110-3 offers you a choice of three track response settings: Mild, Normal, and Quick.

Built for Performance

Electronic Travel Torque Management

The Electronic Travel Torque Management System lets you work fast with more power. The ECU constantly monitors the load of the machine to optimize hydraulic pump output for smooth operation that helps keep the engine running to get the job done.

Hydraulic Pilot Control

This helps ensure consistent oil flow, allowing for direct and dependable operator control and stability.

Shock Reduction During Operation

Seamlessly shifts gear for refined acceleration.

Hinge Pin Height

The loader arm is designed to reach 128.5 inches (hinge pin height) making it easy to dump into almost any truck or trailer.

Standard Self-leveling Function

This feature helps keep the bucket or fork in a horizontal position without manual adjustment while lifting. (It can be turned on or off with the click of a button.)



128.5" (3264 mm)

TY



Kubota Engine

Kubota Original Rubber Tracks

Kubota genuine rubber tracks support your works. We offer 17"7" (450mm) wide tracks from the factory.



112.7 HP Kubota Engine

A reliable 112.7 HP* Kubota engine provides power for most any job site task. New engine complies with Tier IV emissions.

* Engine HP Gross (SAE J1995)

Auto Idling System

The SVL110-3 will shift to idle when the machine is not in use. Reduce engine RPM instinctively when high engine speed isn't needed. Move any control lever and the engine RPM immediately returns.

Common Rail System

The Common Rail System (CRS) electronically controls the fuel injection timing to optimize the fuel consumption.

SPACIOUS OPERATOR SPACE AND COMFORT

New Cab and technologies, and improved A/C Performance make working in the most demanding conditions a breeze.



One-Piece Sealed and Pressurized Cab

The one piece cab helps prevent dirt, dust, rain, and other debris from entering the operator space. Furthermore, noise is kept down^{**2} to let you work for long hours with minimal fatigue.

**Based on ISO10263 comparison with the previous model.



New one-piece type



Conventional type

Heated Air Suspension Seat

Seat air suspension provides a comfortable ride that reduces fatigue during long workdays. Seat comes standard with heat, improving comfort on cold days.

Sliding Front Door

Kubota's traditional slide up front door can be opened regardless of the position of the bucket or loader arms. This allows for machine operation with the door open if desired.

Wide Cab Entrance

A wide entrance makes it easier to get in and out.

Spacious Interior

The spacious interior provides plenty of foot and elbow room and minimizes operator fatigue, even during long work hours.

LED Work Lights (Front and Rear)

LED lights allow you to work through the night or in the darkest building.

Forward Roof Window

The large roof window allows for outstanding upward visibility when dumping into containers, trucks or trailers.

Outstanding HVAC Performance

Outstanding cooling and heating performance regardless of the temperature outside.



OR ROOM

Technology

Color LCD Touchscreen with Jog Dial

The SVL110-3's color LCD touchscreen displays a wide range of functions to keep you in tune with the machine. This screen features touch and jog dial controls and easy-to-read machine vital signs and alerts. It is positioned to the front right of the operator for excellent visibility and easy access.

Attachment Performance Monitor

SVL110-3 has a feature to monitor AUX pressure level (PSI) on the LCD touchscreen. It helps to operate attachment based on the pressure level. The monitor will change when AUX is turned on.



- A. Machine Status (Shows enabled functions and alerts)**
- B. Hydraulic Oil Temperature**
- C. Coolant Temperature**
- D. AUX Mode**
- E. Fuel Level**
- F. DEF level**
- G. Menu Icons**



Rear View Camera

The standard rearview camera displays on the touchscreen allows for better rearward visibility on the job site. The rear view can be set to display continuously or only when the in reverse.



Keyless Engine Start

The engine can be started by entering a 4-digit passcode on the LCD touchscreen and can store up to 51 individual user passwords. Lost keys are a thing of the past!



Radio with Bluetooth®

Standard on Closed Cab units, our new integrated Bluetooth® radio allows for seamless streaming and hands free calling.

*BLUETOOTH® is a registered trademark owned by BLUETOOTH SIG, INC.

MAINTENANCE SIM

Enhanced engine access speeds up and simplifies routine maintenance.

Toolless Swing Out Radiator

No tools are required to swing out the radiator, giving you quick and easy access to the engine bay for maintenance and cleaning.

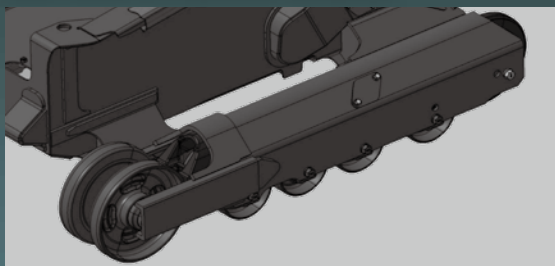


- A. SCR Muffler
- B. Coolant Tank
- C. Radiator
- D. Dual Element Air Cleaner
- E. Battery

Welded Mainframe and Under Carriage

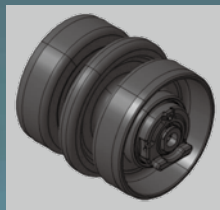
1. Welded, Integrated Mainframe and Undercarriage

The undercarriage forms an integral part of the main frame for maximum durability.



2. Triple Flange Lower Track Rollers

A reliable triple flange design helps minimize the chance of detracking and helps improve stability. They are sealed and kept lubricated.



Tilt-up Cabin

The cab can be tilted 56.5° allowing easy access to the hydraulic pumps, valves, lines and hydraulic tank.



PLIFIED



Engine Equipment and Features

1. Pre-cleaner

Removes dust and dirt from the air prior to reaching the air filter.



2. DEF Tank Cap

The DEF tank has been equipped with a lockable cover to prevent diesel fuel from mistakenly being poured into the tank.

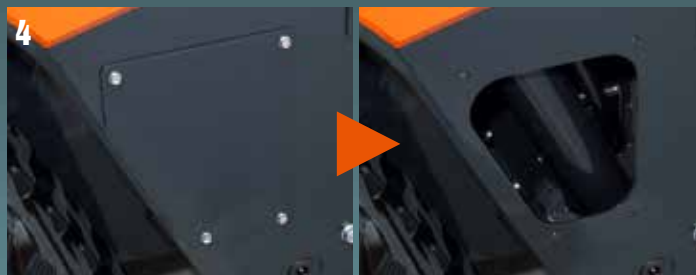


3. Fuel Fill Indicator

When refilling fuel, DEF, or hydraulic oil, a buzzer sounds to prevent overfilling and the potential hazards from fuel spills.

4. Side Panel for Cleaning

Side panel can be removed easily and it makes easy access for removing debris inside the arm.



COMFORT MEETS CONVENIENCE

Jog Dial and Switches

The jog dial and switches are well laid out and intuitively labeled. Panel is back lit making easy to find the button you need in dark conditions.

- A. Home switch
- B. Return switch
- C. Jog dial
- D. Self leveling switch
- E. Working light switch
- F. Beacon light (Opt.) switch
- G. Washer switch (Closed Cab only)
- H. Hydraulic unlock switch
- I. Parking brake switch
- J. AUX port switch
- K. Wiper switch (Closed Cab only)



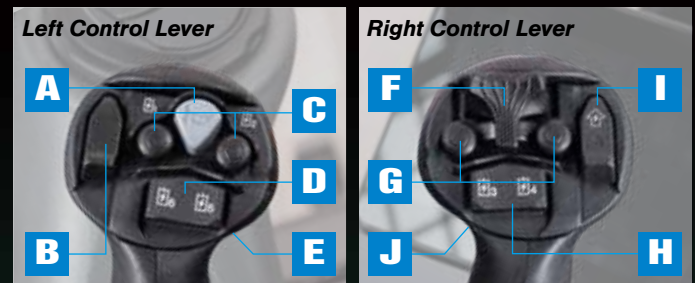
New Deceleration Pedal Feature

Depending on your work, foot throttle now can turn into deceleration pedal with the 1 click of the switches.



Multi-function Levers

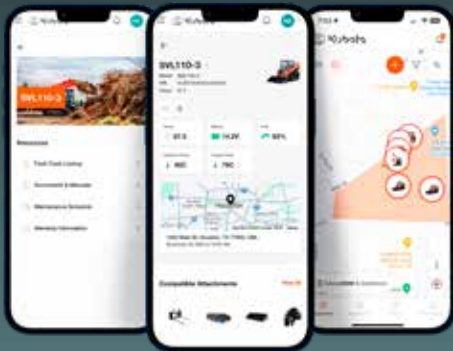
The multi-function levers provide fingertip control of all major vehicle and attachment operations, letting you keep both hands on the levers at all times for optimal operating efficiency. Standard on High-flow models, these levers can also be installed as a kit on Standard flow models.



- A. Horn
- B. Kubota Shockless Ride (KSR)
- C. AUX1
- D. AUX3
- E. Travel Speed
- F. Proportional AUX Switch
- G. AUX Hold Switch
- H. AUX2
- I. AUX Mode Change
- J. Float Switch

WorkSmart TELEMATICS

Let's monitor and track equipment - All Through My Kubota APP.



MONITOR VITAL STATS*

See your equipment's Fuel/DEF levels, accumulated hours, temperatures and more. (*Not all models display vital signs)

MAINTENANCE NOTIFICATIONS

Reminders when maintenance is due and what items need attention.

ADVANCED LOCATION TRACKING WITH GEOFENCES

Always know where your equipment is located. Set up geofencing to plot boundaries that will alert you when the unit leaves an area.

MAINTENANCE SCHEDULE

What maintenance is needed for my machine? And when? Easily find out by looking at the maintenance schedule for your machine. See all of the maintenance items that are needed at each maintenance interval. With WorkSmart Telematics, you can also be notified through My Kubota of the upcoming maintenance that is needed, before the interval arrives.

ADDED LAYER OF SECURITY

In the event your equipment is stolen or missing, you can find it through location tracking or remotely prevent it from being started.

DOWNLOAD THE
My Kubota APP



Purchases of new current year SVL110-3 models come with a 3-year subscription to WorkSmart Telematics. See KubotaUSA.com for complete terms and details about account activation. Purchase of subscription required to access all features and services after 3 years. Services subject to data service connectivity and location availability. Fees for subscriptions are subject to change.

INTELL-ATTACH™ SYSTEM



INTELL-ATTACH™ SYSTEM

The Intelli-Attach System allows the Kubota SVL110-3 to intelligently recognize a Kubota by Land Pride Attachment when equipped with an Intelli-Attach tag. Once programmed, the communication between the receiver and tag automatically recognizes the capabilities of the attachment and adjusts the power unit to match. Real time feedback between the attachment and SVL110-3 helps the operator maximize machine set up and performance.



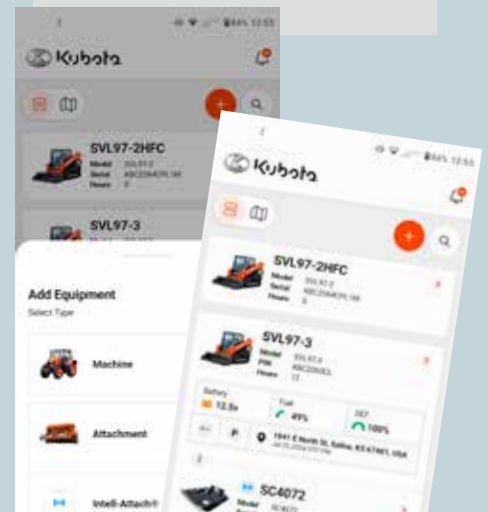
The receiver* (shown with cover off) automatically adjusts AUX flow. This prohibits high flow when a low flow attachment is connected. *Receiver sold separately



Tag is mounted to the attachment and communicates with the receiver wirelessly.

INTELL-ATTACH COMPATIBLE

- HB Hopper Broom
- AB Angle Broom
- SC25/40/60/70 Skid Cutter
- SSG25 Stump Grinder
- SR27 Powered Rake
- BR510/560 Breaker
- SRT27 Skid Tiller
- SBL25/30/35 Snow Blower
- CP Cold Planer



Use the My Kubota App to program attachment tag based on serial number.

EQUIPMENT

STANDARD EQUIPMENT

- Closed CAB (w/ air conditioning)
- Top / Rear window
- Air ride, Air suspension with heated seat
- 2" Retractable seat belt
- Operator presence control
- Pull down arm rest
- Hand/Dial and Foot throttle
- Decelerator Pedal
- Keyless engine start
- USB port
- Radio with Bluetooth (Closed CAB)
- 12V electric outlet
- Horn
- Lockable fuel cap
- Rear-view Camera
- Backup alarm
- Rear view mirror
- Working Lights (LED)
- Hydraulic quick coupler
- Loader arm float function
- Bucket self-leveling (up only)

- Wet disc parking brakes
- High-flow hydraulics (1/2" and 3/4" couplers)
- Adjustable maximum oil flow
- 14-pin coupler for attachments
- Two-speed travel
- Creep mode
- Kubota Shockless Ride (KSR)
- H pattern rubber crawler 17"7"(450mm)
- Counterweight
- WorkSmart Telematics

OPTIONAL EQUIPMENT

- Polycarbonate door*
- 3" Retractable seat belt
- Rear bonnet lock Kit
- Strobe light
- Beacon light
- Radiator screen
- ...and much more.

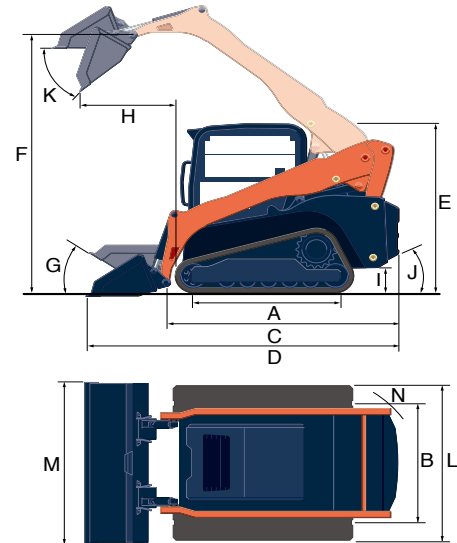
*Factory Option

Specifications

Model		SVL110-3		
Type of operator station		Closed CAB		
Engine	Model	V3800-TIE5-LA		
	Output (SAE J1995 gross)	HP (kW)/rpm	112.7(84.0) / 2500	
	Output (SAE J1349 net)	HP (kW)/rpm	101.3(75.6) / 2500	
	Displacement	cu.in. (cc)	230.0 (3769)	
	Cylinders	4		
	Bore × Stroke	in. (mm)	3.9 (100) × 4.7 (120)	
	Aspiration	Turbocharged		
Loader performance	Rated operating capacity-35% tipping load		lbs. (kg)	3700 (1678)
	Rated operating capacity-50% tipping load		lbs. (kg)	5286 (2398)
	Tipping load		lbs. (kg)	10571 (4795)
	Breakout force	Bucket	lbf. (kgf)	7650 (3469)
		Lift arm	lbf. (kgf)	5288 (2398)
Lift arm path		Vertical		
Undercarriage	Track width	Standard	in. (mm)	17.7 (450)
	Ground pressure	Standard	psi	4.8
	Track rollers (per side)		5	
	Track ground contact length		in. (mm)	65.6 (1667)
	Travel speed	Low	mph (km/h)	5.5 (8.8)
High		mph (km/h)	8.4 (13.4)	
Hydraulic system	Traction force		lbf. (kgf)	13174.7 (5976)
	Aux. hydraulic flow	Std. / High flow	gpm (ℓ/min.)	45.0 (170.4)
	Aux. hydraulic pressure		psi (kgf/cm ²)	3553 (250)
Service refill capacities	Hydraulic system		gal. (ℓ)	18.5 (70.1)
	Hydraulic tank		gal. (ℓ)	10.6 (40.2)
	Fuel tank		gal. (ℓ)	30.6 (115.7)
	DEF tank		gal. (ℓ)	3.4 (12.7)
Operating weight (Includes operator weight 165 lbs.)		lbs. (kg)	12322 (5589)	

Dimensions

A	Length of track on ground	in. (mm)	65.6 (1667)
B	Track gauge	in. (mm)	59.5 (1512)
C	Length w/o bucket	in. (mm)	123.7 (3141)
D	Length w/bucket on ground	in. (mm)	153.6 (3901)
E	Height to top of cab	in. (mm)	83.1 (2112)
F	Bucket hinge pin height at max. lift	in. (mm)	128.5 (3264)
G	Rollback angle at carry position	degree	28
H	Reach at max. lift and dump	in. (mm)	40.7 (1034)
I	Ground clearance	in. (mm)	10.9 (278)
J	Departure angle	degree	30.9
K	Max. dump angle	degree	43
L	Vehicle width standard track	in. (mm)	77.2 (1962)
M	Width with bucket	in. (mm)	81 (2057)
N	Turning radius from center-machine rear	in. (mm)	63.7 (1618)



Kubota Tractor Corporation reserves the right to change the stated specifications without notice. This brochure is for descriptive purposes only and reasonable efforts were used to set forth the contained information; some items shown may be optional and some products shown may not be available at all dealerships. Kubota disclaims all representations and warranties, express or implied, or any liability from the use of this brochure. For complete warranty, safety and product information, consult your local Kubota dealer and the operator's manual. Power (HP/KW) and other specifications are based on various standards or recommended practices. For your safety, Kubota strongly recommends the use of a Rollover Protective Structure (ROPS) and seat belt in almost all applications. This brochure is intended for the United States and US territories only. For information regarding Kubota products or services outside these areas, see Kubota Corporation's global web site. Kubota does not provide parts, warranty or service for any Product which is re-sold or retailed in any country other than the country for which the Product(s) were designed or manufactured.

Copyright © 2025 Kubota Tractor Corporation. All rights reserved.

Kubota®

KUBOTA TRACTOR CORPORATION

1000 Kubota Drive, Grapevine, TX 76051 Tel 888-4 KUBOTA

Visit our web site at: www.kubotausa.com



**Kubota
Genuine Parts**
for excellent
performance,
durability and
safety

