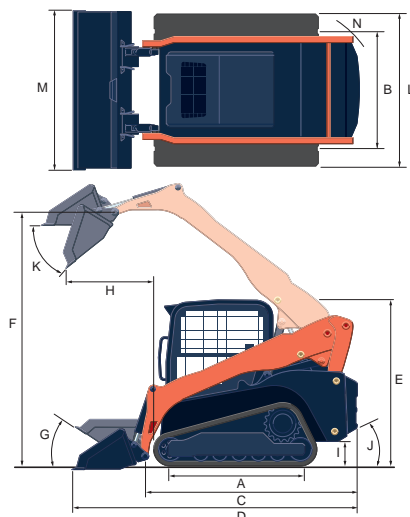


Specifications

Model		SVL65-2S		
Type of operator station		Open CAB / Closed CAB		
Engine	Model	V2607-CR-TE4		
	Output (SAE J1995 gross)	HP (kW)/rpm	68.4 (51.0) / 2600	
	Output (SAE J1349 net)	HP (kW)/rpm	59.9 (44.7) / 2600	
	Displacement	cu.in. (cc)	159.6 (2615)	
	Cylinders		4	
	Bore × Stroke	in. (mm)	3.4 (87) × 4.3 (110)	
	Aspiration		Turbocharged	
Loader Performance	Rated operating capacity-35% tipping load	lbs. (kg)	2100 (953)	
	Rated operating capacity-50% tipping load	lbs. (kg)	3000 (1361)	
	Tipping load	lbs. (kg)	6000 (2722)	
	Breakout force	Bucket	lbf. (kg)	4614 (2093)
		Lift arm	lbf. (kg)	4266 (1935)
	Lift arm path		Vertical	
Undercarriage	Track Width	Standard	in. (mm)	12.6 (320)
		Wide	in. (mm)	15.0 (380)
	Ground pressure	Standard	psi	5.0 / 5.4
		Wide	psi	4.3 / 4.4
	Track rollers (per side)		4	
	Travel speed	Low	mph (km/h)	4.9 (7.8)
		High	mph (km/h)	7.1 (11.5)
	Traction force	lbf. (kgf)	8406 (3813)	
Min. ground clearance	in. (mm)	9.2 (233)		
Hydraulic system	Aux. hydraulic flow	Std./High Flow gpm (ℓ/min.)	17.4 (65.8) / 27.0 (102.2)	
	Aux. hydraulic pressure	psi (kgf/cm ²)	3271 (230)	
Service refill capacities	Hydraulic system	gal. (ℓ)	12.7 (48)	
	Hydraulic tank	gal. (ℓ)	5.3 (20)	
	Fuel tank	gal. (ℓ)	21.7 (82)	
Operating weight (Includes operator weight 165lbs.)		lbs. (kg)	8135 (3690) / 8631 (3915)	

Dimensions



Model		SVL65-2S	
A	Length of track on ground	in. (mm)	57.9 (1470)
B	Track gauge	in. (mm)	52.6 (1337)
C	Length w/o bucket	in. (mm)	107.3 (2725)
D	Length w/bucket on ground	in. (mm)	136.4 (3465)
E	Height to top of cab	in. (mm)	79.9 (2029)
F	Bucket hinge pin height at max. lift	in. (mm)	118.5 (3010)
G	Rollback angle at carry position	degree	30
H	Reach at max. lift and dump	in. (mm)	34.9 (886)
I	Ground clearance	in. (mm)	9.2 (233)
J	Departure angle	degree	30
K	Max. dump angle	degree	40
L	Vehicle width Standard track / Wide track	in. (mm)	65.2 (1657) / 67.6 (1717)
M	Width with bucket	in. (mm)	68 (1727) / 74 (1880)
N	Turning radius from center-machine rear	in. (mm)	57.1 (1451)

Kubota Tractor Corporation reserves the right to change the stated specifications without notice. This brochure is for descriptive purposes only and reasonable efforts were used to set forth the contained information; some items shown may be optional and some products shown may not be available at all dealerships. Kubota disclaims all representations and warranties, express or implied, or any liability from the use of this brochure. For complete warranty, safety and product information, consult your local Kubota dealer and the operator's manual. Power (HP/KW) and other specifications are based on various standards or recommended practices. For your safety, Kubota strongly recommends the use of a Rollover Protective Structure (ROPS) and seat belt in almost all applications. This brochure is intended for the United States and US territories only. For information regarding Kubota products or services outside these areas, see Kubota Corporation's global web site. Kubota does not provide parts, warranty or service for any Product which is re-sold or retailed in any country other than the country for which the Product(s) were designed or manufactured.



KUBOTA TRACTOR CORPORATION

1000 Kubota Drive, Grapevine, TX 76051 Tel 888-4 KUBOTA

Visit our web site at: www.kubotausa.com

©2025 Kubota Corporation



**Kubota
Genuine Parts**
for excellent
performance,
durability and
safety



For Earth, For Life
Kubota

SVL

KUBOTA COMPACT TRACK LOADER SVL65-2S

Kubota's powerful and productive Compact Track Loader for those big jobs in small places.





Tight workspaces are no challenge for a loader packed with big features.

Here's the Compact Track Loader you've been waiting for. A smaller loader that will take you places... Easy to transport and works in tight places with a spacious cabin and power performance.

- SUPERIOR OPERABILITY
- COMPACT AND LIGHTWEIGHT
- EXCEPTIONAL OPERATOR COMFORT

COMPACT TRACK LOADER

SVL65-2S

Engine gross horsepower (SAE J 1995): 68.4 HP (51.0 kW)
Rated operating capacity (35% of tipping load): 2100 lbs (953 kg)
Rated operating capacity (50% of tipping load): 3000 lbs (1361 kg)
Bucket breakout force: 4614 lbs (2093 kg)
Operating weight (open cab, including operator weight 165 lbs): 8135 lbs (3690 kg)





Advanced Multifunction Valve (AMV)

The SVL65-2S's hydraulic system features an Advanced Multifunction Valve that provides smooth movements when hydraulic functions are operated simultaneously. The AMV now allows operators to run the AUX hydraulics, bucket, and loader arm functions together.



KUBOTA PRODUCTIVITY

Excellent Workability

Outstanding Kubota Vertical Lift

Easily dump into dumpster or truck, thanks to Kubota's outstanding vertical lift. It raises the bucket even higher (118.5 in. at the hinge pin) without sacrificing any of the SVL65-2S's exceptionally long reach (34.9 in.).

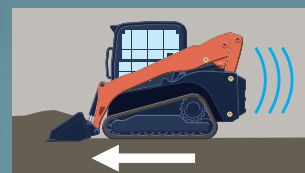
Standard Self-leveling Function

This feature helps keep the bucket or fork in a horizontal position without the need to manually adjust the angle during lifting. Can be turned on or off with click of a switch.



Electronic Travel Torque Management

The Electronic Travel Torque Management System lets you work faster. The ECU constantly monitors the load of the machine to optimize hydraulic pump output for smoother operation that keeps the engine running to get the job done.



Kubota Engine

Powerful Kubota Engine

A reliable 68 HP* Kubota engine brings plenty of power to any excavating or loading job, letting you work faster and with greater efficiency.

* Engine HP Gross (SAE J1995)

Common Rail System

The Common Rail System (CRS) electronically controls the fuel injection timing to optimize the fuel consumption.

Travel Performance

Standard Two-speed Travel

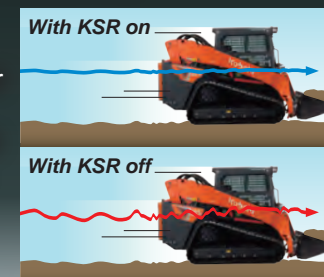
With a maximum top speed of 4.9 mph in low gear, and 7.1 mph in high gear to get the job done faster.

High Ground Clearance

A high ground clearance of 9.2 inches lets you travel over large obstacles with ease.

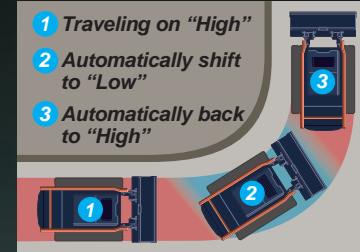
Kubota Shockless Ride (KSR) (Option)

Kubota's ride control system (KSR) is now available with the SVL65-2S. It is a loader suspension that enhances comfortability and helps reduce spilling loads on rough terrain.



Auto-Shift

Auto shift allows machines to turn smoothly. The ECU is constantly monitoring the traction load. When the traction load gets high while turning, but before the machine starts to lose traction, it automatically shifts down for better low-range torque. Once the traction load is eased, it shifts back up automatically for high speed.



Track Response

Operators can now change the sensitivity of their machine control response through the LCD panel. The SVL65-2S offers you a choice of three track response settings: Mild, Normal, and Quick.



EXCEPTIONAL COMFORT



Sliding Front Door

Kubota's traditional slide up front door can be opened regardless of the position of the bucket or loader arms. This allows for machine operation with the door open if desired.

Highback seat (Standard)

The SVL65-2S comes standard with a high back seat that will help to support your body and ease your fatigue.

Heated Air Suspension Seat (Option)

Air suspension seat for a comfortable ride during long days, and heat to improve comfort when it gets cold.

Plenty of Legroom

The SVL65-2S's cab provides plenty of leg and foot room. The floor mat can be removed for cleaning, and a small opening in the floor allows easy removal of dirt and debris.



LED Work Lights (Front and Rear)

LED lights allow for maximum visibility in low-light conditions.

Wide Cab Entrance

A wide entrance makes it easier to get in and out.



A/C Performance

Optimized Air Conditioning

The climate control system provides an optimized airflow for outstanding cooling and heating performance and supreme operator comfort all year round.

Roomy and Clean Cab

With a large and comfortable operator's station, the SVL65-2S offers an extra level of comfort and convenience.

Technology

Color LCD Touch Panel with Jog Dial

The SVL65-2S's digital color LCD Touch Panel builds on the success of the Kubota's Intelligent Control System by providing a wide range of functions to keep you aware of the SVL65-2S's operating status at all times. This panel features touch and jog dial enabled controls for quickly selecting operations and functions, as well as easy-to-read indicators and alerts. The panel is positioned to the front right of the operator for excellent visibility and fast access.



A. Situation Indicator (such as working function, battery charge indicator etc..) **B.** Hydraulic Oil Temperature **C.** Coolant Temperature **D.** AUX Mode **E.** Fuel Level **F.** Menu Icons



Rear View Camera

The standard rear view camera allows for better rear visibility on the job site. The rear view can be set to display continuously or only when in reverse.



Keyless Engine Start

The machine is accessed by entering a 4-digit passcode on the LCD Touch Panel, allowing the engine to be started with the touch of a button. With the ability to set up to 51 user passcodes, lost keys will be a thing of the past.



Radio with Bluetooth® (Closed Cab only)

Standard on Closed Cab units, our integrated Bluetooth® radio allows for seamless streaming and hands free calling.

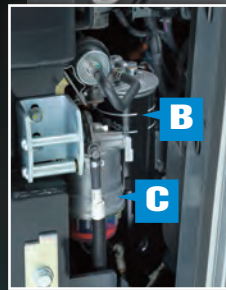
EASY MAINTENANCE

Slide and Tilt Radiator and Oil Cooler

Both the radiator and the oil cooler quickly slide forward and tilt downwards, helping to ensure access to other engine parts during maintenance.



- A. Dual Element Air Cleaner
- B. Fuel Filter
- C. Water Separator
- D. Battery
- E. Coolant
- F. Radiator



Tilt-up Cabin

The cab can be tilted 72°, without having to lift the arm, allowing easy access to the hydraulic pumps, valves, lines and hydraulic tank.

Bolt on Handrails

The handrails are bolted to the cab to allow for quick and easy replacement in the event they get damaged.



Impressive Durability

Welded Mainframe and Under Carriage

1. Welded, Integrated Mainframe and Undercarriage

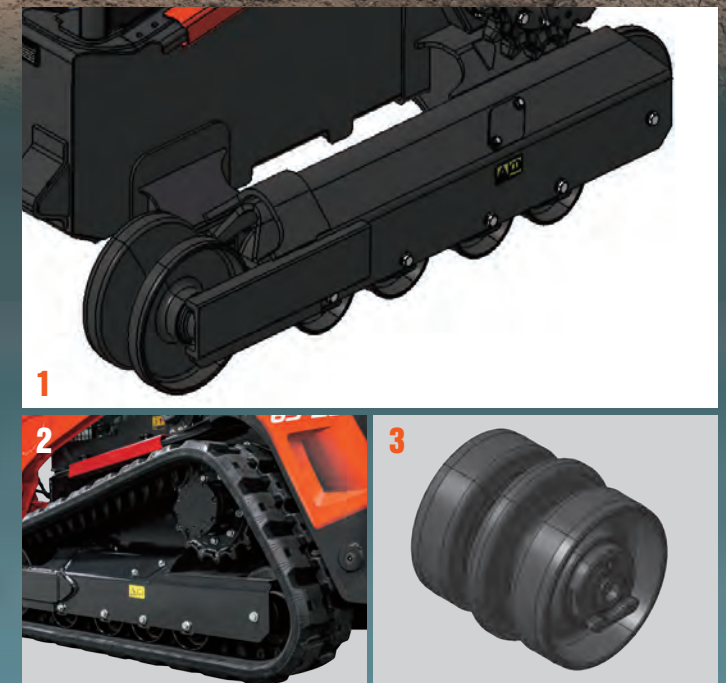
The undercarriage forms an integral part of the main frame for maximum durability.

2. Kubota Original Rubber Tracks

Kubota genuine rubber tracks support your works. We offer 12.6" (320mm) and 15.0" (380 mm) wide tracks from the factory option.

3. Triple Flange Lower Track Rollers

A reliable triple flange design helps minimize the chance of detracking and helps improve stability. They are sealed and kept lubricated.



COMFORT MEETS CONVENIENCE

New Jog Dial and Switches

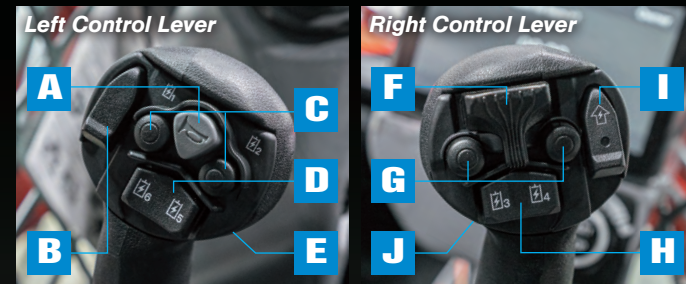
The jog dial and switches are well laid out and intuitively labeled. Panel is back lit making easy to find the button you need in dark conditions.

- A. Home switch
- B. Return switch
- C. Jog dial
- D. Self leveling switch
- E. Working light switch
- F. Beacon light (Opt.) switch
- G. Washer switch (Closed Cab only)
- H. Hydraulic unlock switch
- I. Parking brake switch
- J. AUX port switch
- K. Wiper switch (Closed Cab only)



Multi-function Levers

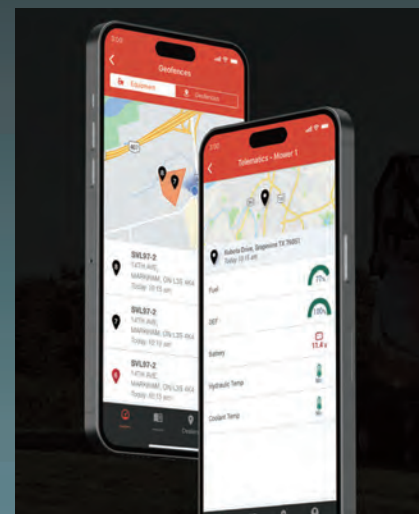
The multi-function levers provide fingertip control of all major vehicle and attachment operations, letting you keep both hands on the levers at all times for optimal operating efficiency. Standard on High-flow models, these levers can also be installed as a kit on Standard flow models.



- A. Horn
- B. Kubota Shockless Ride (KSR)
- C. AUX1
- D. AUX3
- E. Travel Speed
- F. Proportional AUX Switch
- G. AUX Hold Switch
- H. AUX2
- I. AUX Mode Change
- J. Float Switch

KUBOTA NOW TELEMATICS

Let's monitor and track equipment - All Through myKubota APP.



MONITOR VITAL STATS*

See your equipment's Fuel/DEF levels, accumulated hours, temperatures and more. (*Not all models display vital signs)

MAINTENANCE NOTIFICATIONS

Reminders when maintenance is due and what items need attention.

ADVANCED LOCATION TRACKING WITH GEOFENCES

Always know where your equipment is located. Set up geofencing to plot boundaries that will alert you when the unit leaves an area.

MAINTENANCE SCHEDULE

What maintenance is needed for my machine? And when? Easily find out by looking at the maintenance schedule for your machine. See all of the maintenance items that are needed at each maintenance interval. With KubotaNOW telematics, you can also be notified through myKubota of the upcoming maintenance that is needed, before the interval arrives.

ADDED LAYER OF SECURITY

In the event your equipment is stolen or missing, you can find it through location tracking or remotely prevent it from being started.

DOWNLOAD THE myKUBOTA APP



ATTACHMENT

Kubota by Land Pride CE Attachments are performance matched to your Kubota SVL Series. This process helps to ensure that the hydraulic requirements, weight, and width of your attachment matches your power unit's exact specifications.

SCAN TO VIEW
the complete range of
performance matched
attachments at
landpride.com



<h3>SKID CUTTERS</h3>	<h3>SKID GRADERS</h3>	<h3>POWERED RAKES</h3>
<h3>COMBO BUCKETS</h3>	<h3>ANGLE BROOMS</h3>	<h3>HOPPER BROOMS</h3>
<h3>PALLET FORKS</h3>	<ul style="list-style-type: none"> Augers Trenchers 6-Way Dozer Blades Root Grapple Claw Grapple Rock Grapple Rock Bucket Scrap Grapple Buckets 	<ul style="list-style-type: none"> Stump Grinders Heavy-Duty Buckets Light Material / Snow Buckets Utility Buckets Loader Boom Tree Pullers Primary Seeder
		<ul style="list-style-type: none"> Skid Tiller Snow Blowers Snow Pushers Road Saw Cold Planers Breakers Skid Steer Hitch Tilt Hitch

EQUIPMENT

STANDARD EQUIPMENT

- Open CAB
- Top / Rear window
- 2" Retractable seat belt
- Operator presence control
- Pull down arm rest
- LCD touch panel with jog dial
- Rear view camera
- Keyless engine start
- Backup alarm
- LED work lights (Front 2 / Rear 2)
- 12V electric outlet
- USB port
- Glow plug
- Mechanical quick coupler
- Loader arm float function
- Bucket self-leveling (up only)
- Auto-shift
- Track Response
- Wet disc parking brake
- Dial and Foot throttle
- Horn
- Two-speed travel
- Lockable fuel cap
- Rubber crawler (320mm)
- KubotaNOW Telematics

OPTIONAL EQUIPMENT

- Closed CAB (w/ air conditioning)*
- Radio with bluetooth (Closed CAB)*
- Air Suspension Seat with Heater**
- Kubota Shockless Ride (KSR)**
- High-flow hydraulics (1/2" and 3/4" couplers)*
- 14-pin coupler (standard on high flow model)
- Hydraulic quick coupler*
- Rubber crawler (380mm)*
- CCV heater kit (standard on Closed CAB)*
- CCV pressure switch and relief valve kit (standard on Closed CAB)*
- Polycarbonate door
- Rear bonnet lock Kit
- 3" Retractable seat belt
- Rear view mirror
- Strobe light
- Beacon light
- Engine block heater
- Radiator screen
- ...and much more.

*Factory Option **Available for some CAB models as a factory option